

A Tip from the PTA

Family media strategies from the PTA



The CS/Effect

A recent report by the National Research Council notes that the science in real-life crime labs can be vastly different from the way it's portrayed in popular TV dramas such as *CSI*. An expectation that forensic evidence is always available and conclusive, as it is on TV, has been reported among judges, juries, and lawyers and could affect the outcome of a trial. This is a good reminder that what we see on TV or in any form of media is not real. A TV show, webpage, or news story is a carefully selected and edited construction. Someone decided what to include or leave out, what to emphasize or ignore. So every once in a while it's worth asking ourselves and our children, "Is this real? How is it different from real life? Why was the story told this way?" For more tips on talking with your children about today's media, visit PTA's [TV and Video Game Safety](#) or Cable in the Classroom's [Media Smart for Parents](#).

Family-Friendly Cable Programs in March

Cable in the Classroom presents a sampling of entertaining TV programs for family viewing



Star Wars Tech (History Channel)

March 2 at 7:00 PM ET/PT

Have a *Star Wars* fan in the house? This History Channel special takes a look at the technology shown throughout the six *Star Wars* films and examines their viability through the eyes of cold hard science. TV-PG.



Nim's Island (HBO)

March 14 at 8:00 PM ET/PT

In this family film, an imaginative young girl living on a remote island with her scientist father connects with the author of her favorite novel. TV-PG.



Renovation Nation (Planet Green)

March 27 at 9:00 PM ET

This Planet Green series (pictured) aims to help families across the country achieve their green project dreams. New episodes this season visit New Orleans for a green historic-preservation restoration, Boston for an "out-sulation" project that could help families around the country with their heating bills, and Hawaii to help the Army go green at Fort Shafter. TV-G.

Ace Ventura Jr: Pet Detective (Cartoon Network)

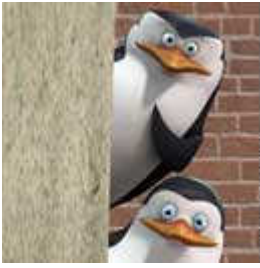
March 1 at 7:00 PM ET/PT

In this new animated movie from Cartoon Network, the son of the world's best pet detective steps into his father's shoes. But when his mother is wrongly accused of stealing a baby panda, Ace Jr. must do more than track down lost school pets -- he has to find some real criminals and clear his mom's name! TV-Y7.

Yellowstone (Animal Planet)

March 22 at 8:00 PM ET/PT

Filmed over the course of a year in Yellowstone National Park, this Animal Planet special follows the unfolding stories of charismatic wild characters whose lives and fortunes are bound together in one of the world's last and most spectacular wildernesses. In this harsh landscape of grassland, river, and mountains, viewers witness the intertwined stories of the park's icons: the grey wolf, the grizzly bear, and the herds of buffalo and antelope that stalk the plains. TV-G.



The Penguins of Madagascar (Nickelodeon)

March 28 at 9:30 PM ET/PT

This new animated Nickelodeon series (pictured), based on the *Madagascar* movies, features the all-new adventures of Skipper, Kowalski, Rico, and Private, four penguins who believe they lead an elite strike force from their Central Park Zoo headquarters. Throughout the season, new animals will be introduced in addition to old friends from the films. TV-Y7.

Jon & Kate Plus 8 (TLC)

March 23 at 9:00 PM ET/PT

The Gosselins grow another year older, and parents Jon and Kate continue to accomplish things no one ever thought possible with two sets of multiples. This episode of the TLC series follows the family as they go skiing together for the first time. TV-G.

Sci-Trek (Discovery Channel)

Wednesdays at 10:00 PM ET/PT

Discovery Channel's *Sci-Trek* brings to life "what if" scientific mysteries. Find out if ancient fault lines could really bring a major earthquake to New York City; if we could mine the Moon for resources; and if we are closer to our Neanderthal cousins than we thought. TV-G.

For more family-friendly programs, plus information on using parental controls to block out inappropriate content, go to ControlYourTV.org.

Cable on the Web

CIC presents a sampling of family-friendly websites

Titanic: The Final Secret (channel.nationalgeographic.com/episode/titanic-the-final-secret-3570)

This National Geographic Channel website explores the real reason Dr. Bob Ballard was searching the ocean floors when he discovered the *Titanic* -- he was on a top-secret mission to analyze two sunken U.S. Navy submarines.

The Detonators (dsc.discovery.com/tv/detonators/detonators.html)

This companion website to the Discovery Channel series *The Detonators* gives viewers a backstage pass to some of the world's biggest and toughest demolition projects with video of demolitions taken by special synchronized cameras, an explosives quiz, and interviews with demolition experts.

Note: PTA does not endorse any television programs or websites and is not responsible for the selections in this newsletter or the content in those selections. All programs and websites are selected independently according to criteria established by Cable in the Classroom, the cable industry's education foundation. For information about these criteria, go to www.ciconline.org/parents.

Some networks may not be available in your area. Check your local listings.

Subscribe:

To receive your own free copy of Media Smart, contact kc.publicaffairs@twcable.com

Feedback:

Please send feedback to cic_editor@ccicrossby.com

